

THE MARINA MAILER

A quarterly communication from Nelson Marina

Issue 14 – September 2018



Marina Team News

Now that the days are getting longer, Marina staff are seeing more boaties out on their berths and have some helpful observations.

Please check ropes and ensure your boat is secure as Spring can be blustery. Winds of 65 knots have been recorded inside the Marina. If boats aren't well secured they can come loose and get damaged, or worse still, damage neighbouring boats. Check fenders for wear and replace as necessary, inspect lines for chafing and ensure they're heavy enough for the weight of your boat. The other thing to beware of at this time of

year is slippery pontoons – and we are currently waterblasting the priority areas.

Communication is important for the Marina team. If you have anything you would like to add to the next newsletter please contact the Marina Office on 03 546 7768. Alternatively, call in to see us at Akersten Street.

Summer Cruising: Greville Harbour/ Wharariki

Boaties thinking about summer cruises this year might want to consider visiting Greville Harbour / Wharariki on the West Coast of d'Urville Island.

In a fast launch, you can get there in several hours. But in a small yacht with a crew that doesn't like too much 'sea' it can require a day or two, perhaps with an overnight stay at Croisilles Harbour.

Since 2014, Greville Harbour/ Wharariki has been recognised by its dual names. 'Wharariki' refers to a type of red flax that is an important taonga or cultural treasure to Ngāti Koata people. The name Greville Harbour was assigned in 1849 by Captain Stokes of the HMS surveying ship, Acheron. It was probably chosen in honour of Algernon Frederick Greville, aide-de-camp to the Duke of Wellington at the Battle of Waterloo.

Greville Harbour/ Wharariki has a reputation as an attractive and well-protected anchorage, although it can be very blustery. The entrance requires care due to reefs and a boulder bank with a narrow entrance. Sea conditions at the boulder bank entrance

are dangerous in heavy onshore winds. These winds, combined with a strong outgoing tide, can result in a dangerous sea just outside the entrance. In strong NW conditions it is advisable to wait until near high water. Yachts attempting to pass through the boulder bank under sail should ensure that the wind and tide is with them.

Mill Arm – named after a former sawmill – is the most used anchorage and parts of it give shelter from all wind directions. The Arm's head is shallow and boats should not attempt to use the last 400m. The Tasman Bay Cruising Club provides a mooring in Mill Arm for members – which is a good reason for joining. Beware of submerged logs which can foul your anchor.

Refer to charts for more detail or go online to:

www.cruiseguide.co.nz/maps/

Pontoon Finished

The new pontoon at the Akersten Street ramp is up and running.

There has been a great response from power boat users and we are expecting congestion at the ramp to be much less this summer than in previous years. The final stage of this project is moving the boat storage area and redeveloping it into parking for the proposed water sports facility and to provide more trailer space for ramp users. The painted lines on the ramp will also be redone.



Company Profile: Survitec

You need a lifejacket to fit every person on your vessel and if your jackets are looking a bit tatty then it is time to visit Survitec.

Survival Technology is Survitec's core business and also where its name came from! Whether you need a liferaft or lifejacket serviced, your EPIRB programmed, or a total safety package for your vessel, they are a one-stop-shop for marine safety equipment and servicing.

"Our customers range from NZ Defence Forces, commercial fishing companies, port authorities, marine retailers, boat builders and anybody on the water who cares about safety," says Dave Chapman, National Sales Manager. A liferaft is a big ticket item to purchase, but one that Dave says is "essential if you are sailing off-shore or around the coast of NZ."

"We've worked hard to grow our business and have become extremely well known for our RFD branded products and

services. We also stock the best brands in marine and aviation safety, including Crewsaver lifejackets and survival suits, Comet distress signals, Daniamant lifejacket and man-overboard lights."

Paul Scholfield is the Nelson Branch Manager and you can find him and the team at: 76 Vickerman Street, Port Nelson. Phone: 03 548 2996. Email: rfdnz.nelson@survitecgroup.com



Environment: Pump-out Facility Upgrade

There is a new sewerage pump-out facility on pontoon F at the end of the visitor berth. This pump is an improvement on the old one and very easy to use. Marina staff are happy to assist if you are unsure what to do.

Please do your part to keep our environment clean. Before the boating season starts, check that your head, holding tank (you should have one), bypass valve and pumping system are all working properly. Boat sewage is a serious risk to health and the environment by introducing bacteria, nutrients and hazardous chemicals. Under the Resource Management (Marine Pollution) Regulations 1998, it is illegal to discharge sewerage directly into the Marina. Also, it is prohibited to discharge untreated sewage within 500 metres of shore or a marine farm, 200 metres of a marine reserve, or in water less than 5m deep – which means no disposal anywhere in the Nelson Haven.

Marina Noticeboard

- There will be activity on the **hardstand** over coming months as it is sealed to ensure that toxins and/or harmful organisms are not released into the marine environment, control dust and make for a safer working environment.
- The **trailer boat storage yard** relocation has begun. As part of this, fencing, lighting and improved security will be installed. Trailer yachts require a once-off permit to be moved on Akersten Street with their masts raised. Contact the Marina Office for details.
- **Please do not to feed stingrays** in the Marina. It changes their behaviour and increases the risk to people who are in the water with them. Stingrays have become used to being fed and, in some cases, have swapped their normal night-time foraging for daytime feeding. Divers inspecting biofoul on boats have had stingrays come close, looking for food.
- **Insurance matters:** Insurance is a requirement of the berth-holder licence. To help us keep our records updated, please advise the Marina Office of your current insurance expiry date for the 2018-2019 year. Also, if you have gas on board your boat, check if you need a Gas Certificate for your insurance to be valid.

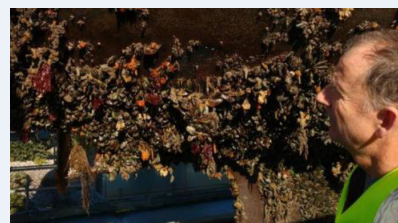


Photo: Three years of accumulated micro-organisms, plants and animals

- As part of the **Biosecurity Conference** in July, the Marina put a boat onto the travel lift and showed what three years of accumulated micro-organisms, plants and animals look like. Participants heard from Top of the South Marine Biosecurity Partnership (TOSMBP), Cawthron Institute, and Nelson Marina about the work that they do. Go here for more about biosecurity www.marinebiosecurity.co.nz/resources
- Here is a quote from a long-term and frequent Nelson Marina visitor, when he applied to go onto the waitlist for a permanent berth:
"I always thought that signing up for a permanent marina berth was like buying a plot in a cemetery."

Your Nelson Marina



Bruce Thompson
Marina Supervisor
Nelmac Facilities
Management
e: bthompson@nelmac.co.nz



Paul Jonkers
Assistant Marina Supervisor
Nelmac Facilities
Management
e: marina@nelmac.co.nz



Annie Guyatt
Assistant Marina Supervisor
Nelmac Facilities
Management
e: marina@nelmac.co.nz